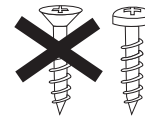




# Jalousie 16/25 mm

Typ 8500

Bitte nur beiliegende Schrauben verwenden.  
Please use enclosed screws only.  
Se servir exclusivement des vis jointes.  
Просьба использовать только  
приложенные винты.



Wichtig! Bitte aufbewahren.

Important! Please keep together.

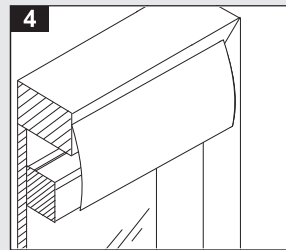
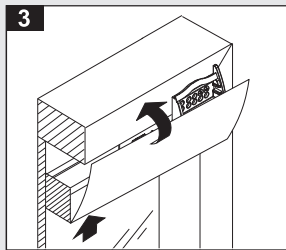
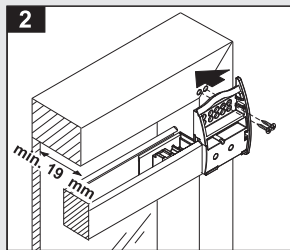
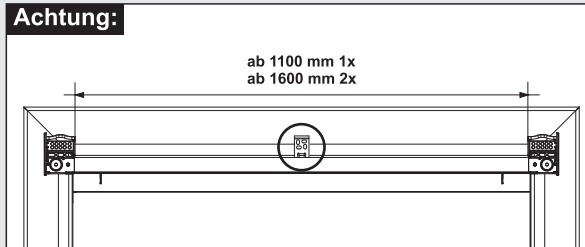
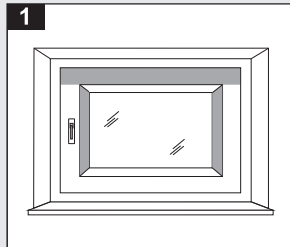
Important! Veuillez conserver.

Важное указание!  
Просьба хранить!

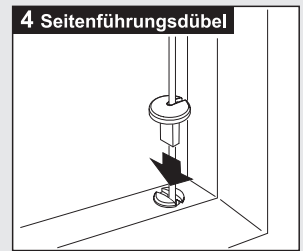
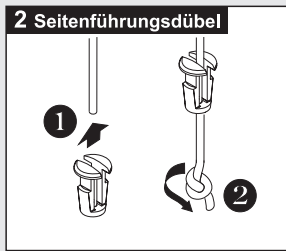
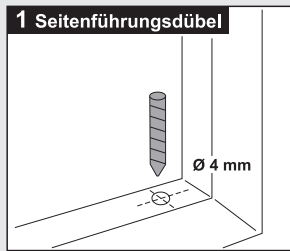
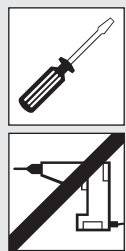
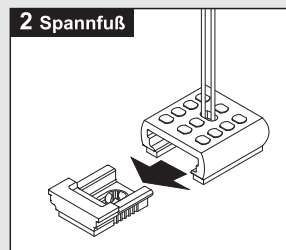
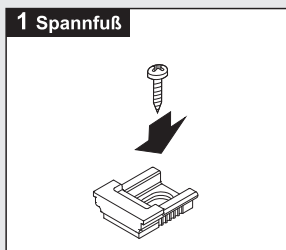
**Achtung: Jalousie muss waagrecht montiert werden.**

Montage • Fitting • Montage • Монтаж

## Montage zwischen den Glasleisten



## Seitenverspannung



Demontage • Disassembly • Démontage • Монтаж

